

DB LEWIS
ARCHITECTURE + DESIGN



© 2009 DB LEWIS ARCHITECT, DBLA - THRESHOLDS INTL. INC



DEAN B. LEWIS, AIA, NCARB, ASID
PRINCIPAL

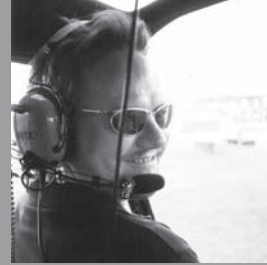
DB LEWIS Architecture+Design is a full service architecture firm originally founded in 1997 by the Architect-Urbanist, Dean B. LEWIS. With offices in Miami and Paris, DBLA focuses on bringing together insightful professional experience from both Europe and America in order to provide extensive practical knowledge and competitive design and planning innovation to all the firm's projects. Located in the Design District of Miami, DBLA has specialized on Urban Mixed-Use Development projects throughout the region including MAXMIAMI, a 425,000SF Commercial Highrise development approved for the center of Miami's Downtown Entertainment District. Mr. Lewis also was the Architect for the Bouygues Immobiliers: Office Park, and CM Bank Headquarters + Hotel Complex– in Dijon, France.

Dean B. LEWIS AIA, Dplg is a registered Architect in the states of Maryland, Florida and Paris, France. Mr. Lewis has completed his studies at Harvard Law School and holds a Masters degree in Architecture and a Bachelor of Science degree in Architecture and City and Regional Planning. While in Rome, Italy studying on a travel scholarship, he completed his master's thesis on: 'Water and Greco-Roman Urbanism'. Mr. Lewis has also studied at the Ecole Nationale Supérieure des Beaux Arts in Paris, France and has taught senior design and drawing studios at Ohio State University, the University of Texas, and at the Ecole Américaine d'Architecture in Fontainebleau, France.

Mr. Lewis, born in 1961, currently has over 17 years of professional experience in architecture and design and has developed expertise in mixed-use programs including: office headquarters, bank facilities hotels and commercial components. In addition, his design architect experience includes, one hospital, an art museum, a performing arts center and a convention center. He has worked for and consulted with international firms such as: CHK Torti-Gallas Architects + Planners in Washington, DC;

Adrian Fainsliber-Architecte-Urbaniste in Paris- where he was in charge of design and project management of the Museum of Modern Art in Strasbourg, France; and for Arquitectonica Intl where he directed the Paris-based European office for 6 years while completing design and construction administration of the 1640 seat PAC, Opera + Concert Hall, and the 600 seat Convention Center of Dijon, France. Mr. Lewis has successful international design competition experience for which selected drawings and collaborative architectural work have been both exhibited abroad and published in many professional journals and newspapers such as: Florida / Caribbean Architect, Architect, Architectural Record, Forms et Structures, Archinews, Archicr  e, Techniques B  timent, Texas Architect, The Miami Herald, Miami Today and the New York Times.

Mr. Lewis lives between Miami and Paris with his wife and two children. He serves as the Design Chair of the Miami Modern Association of Biscayne Boulevard (MIMO), serves on the City of Miami's Commercial and Affordable Housing Committee, and serves on the American Institute of Architect's Miami Chapter's Special Committee for Miami's new Zoning Code reviews. DB LEWIS Architecture+Design is a USGBC member and Mr. Lewis is an active member of the Urban Land Institute, L'Ordre d'Architectes-France, and a past member of the American Society of Perspectivists, BNI, and the Miami Beach Chamber of Commerce.



MARTINE T. LEWIS, VICE PRESIDENT
INTERIOR DESIGN DIRECTOR

Ms. Lewis has over 7 years of specialized experience in Interior Design. Ms. Lewis is also a co-founder of DB LEWIS Architecture+Design and maintains a principal role in overseeing office management. Where her Projects include mixed Luxury Single family residential, Multi-Family Residential: Clubhouse Interiors, Lobby Design and Common Areas. Other work includes Commercial Offices, Restaurants, Lofts, Retail, Art Gallery, Mixed-Use projects and numerous luxury residential projects. She also has created and directed fabricated of her custom furniture designs implemented in the firm's projects. Prior to commencing her career in Interior Design, Ms. Lewis provided 6 years of award winning sales and marketing in the high tech medical and pharmaceutical industry in France.

REPRESENTATIVE PROJECT EXPERIENCE:

- Max Miami, Phase I, Miami, FL. Mixed use commercial high rise 32 stories programmed for the Media Arts Industry for a total square footage of 423,520. This project includes a 136 room hotel (97, 489 SF), and 26 condominium/ apartment units to include a total of 70 bedrooms with an average room size of 1,200 SF. There is 35,800 SF of commercial retail and over 232,000 SF of offices and recording studios, television studios and other specific areas for the Media Arts Industry. Amenities include meeting/conference areas, swimming pool, restaurants both indoor and outdoor, retail galleria, terraces and parking. Role: Interior Designer.
- Source Mixed Use High Rise, Miami, FL. Mixed use 9 story high rise to accommodate 15 luxury three and four bedroom condominiums, 3,000 SF of retail and structured parking. Amenities include pool, terraces, roof terrace, meeting/conference room and gym. Role: Interior Designer.

- SegaFredo-SOMI, South Miami, FL. New Restaurant-Café-Bar for the SegaFredo franchise. 144 seats, indoor outdoor dining combining the new restaurant prototype. Full Architecture and Interior Design contract services including thematic design services, and full kitchen.

- World Realty, Miami, FL. The new commercial interior office and exhibit gallery of the World Realty Group's Miami office headquarters. Custom millwork, glass office wall partitions and reception desk, furniture design was part of the full service interior and exterior architectural services.



EDUCATION:

Ms. Lewis studied Advanced Drawing and Art Studies at the L'Ecole du Louvre à Paris and holds a Post Graduate Studies Professor Level degree in History and Geography and a 4 Year Master Degree 'Maitrise' in 14th-15th Century History and Geography from Universite des Sciences Humaines at Besancon, France.



COMING PROJECTS

Miami, Florida

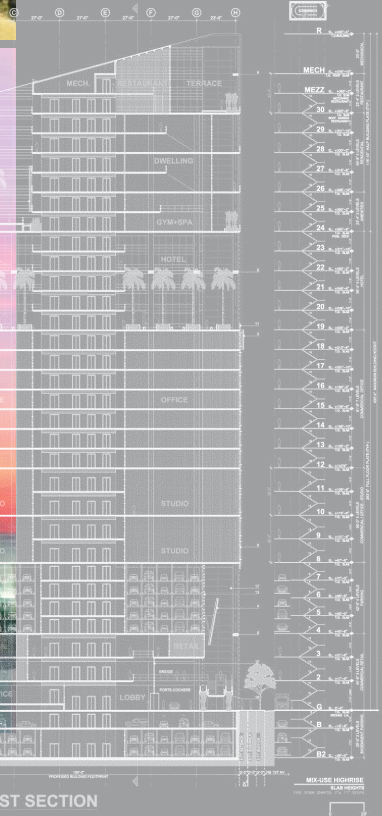


5910 North Bayshore Drive | Miami, FL 33137 | T+1(305).456.7252 | www.dbla1.us | www.dbla2.us

DB LEWIS Architect -Thresholds Intl. inc



MAX MIAMI 2008
Miami, Florida



5910 North Bayshore Drive | Miami, FL 33137 | T+1(305).456.7252 | www.dbla1.us | www.dbla2.us

DB LEWIS Architect -Thresholds Intl. inc



DIJON AUDITORIUM - PERFORMING ARTS CENTER, 1998
Dijon, France



DBLA Role: Project Architect, Architect of Record
in collaboration with Arquitectonica Intl



DIJON AUDITORIUM - PERFORMING ARTS CENTER, 1998
Dijon, France



DBLA Role: Project Architect, Architect of Record
in collaboration with Arquitectonica Intl



STRASBOURG MUSEUM OF MODERN ART , 1992
Strasbourg, France



DBLA Role: Project Manager
for Adrian Fainsilber, Architect-Urbanist



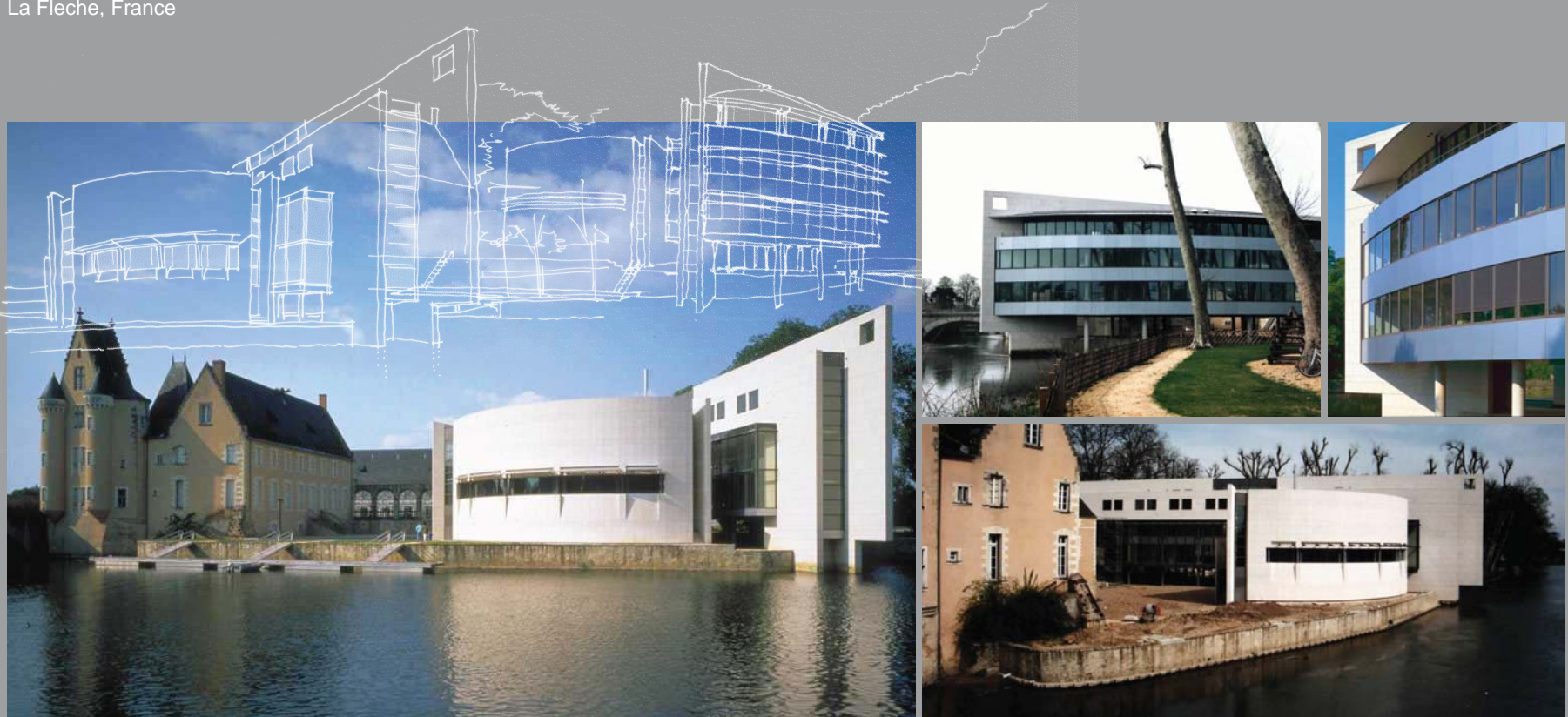
5910 North Bayshore Drive | Miami, FL 33137 | T+1(305).456.7252 | www.dbla1.us | www.dbla2.us

DB LEWIS Architect -Thresholds Intl. inc



LA FLECHE, FRANCE - HOTEL DE VILLE, 1992

La Fleche, France



DBLA Role: Project Manager
for Adrian Fainsilber, Architect-Urbanist

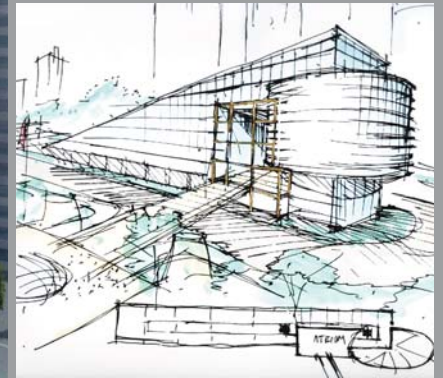
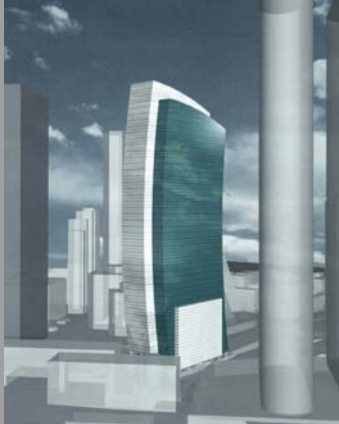
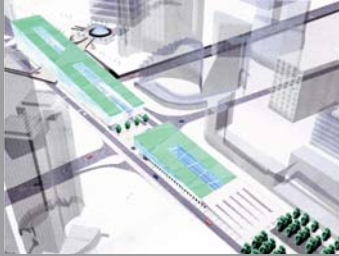


5910 North Bayshore Drive | Miami, FL 33137 | T+1(305).456.7252 | www.dbla1.us | www.dbla2.us

DB LEWIS Architect -Thresholds Intl. inc



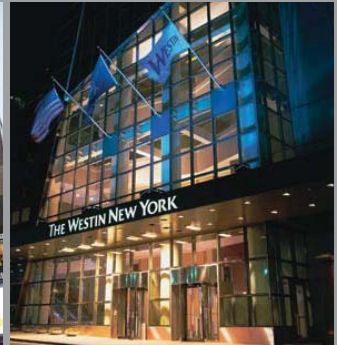
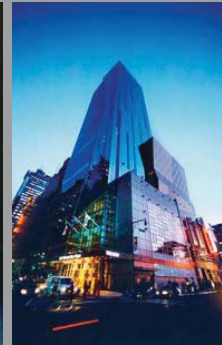
LA DEFENSE, PARIS - OFFICE TOWER, 1999
Paris La Defense, France



DBLA Role: Project Architect, Architect of Record
in collaboration with Arquitectonica Intl



WESTIN HOTEL
New York, NY



DBLA Role: Project Manager, Architect for Arquitectonica Intl



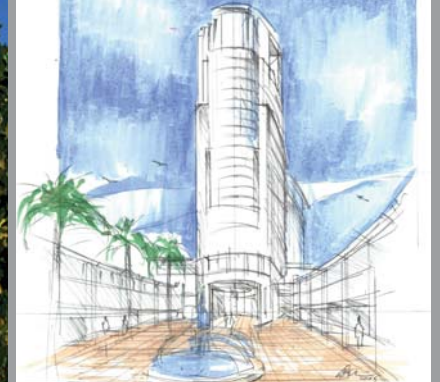
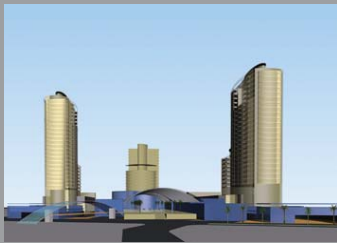
HOSPITAL D'ENFANT ,1992
Purpan, France



DBLA Role: Project Manager
for Adrian Fainsilber, Architect-Urbanist



VISAGE
Miami, Florida



SFBC OFFICE HEADQUARTERS, MIXED-USE DEVELOPMENT
Miami, Florida



5910 North Bayshore Drive | Miami, FL 33137 | T+1(305).456.7252 | www.dbla1.us | www.dbla2.us

DB LEWIS Architect -Thresholds Intl. inc



SFBC OFFICE HEADQUARTERS, MIXED-USE DEVELOPMENT
Miami, Florida



5910 North Bayshore Drive | Miami, FL 33137 | T+1(305).456.7252 | www.dbla1.us | www.dbla2.us

DB LEWIS Architect -Thresholds Intl. inc



PICADILLY RESTAURANT, 1999
Miami, Florida



GALERIE BERTIN-TOUBLANC, 2007
Miami, Florida



5910 North Bayshore Drive | Miami, FL 33137 | T+1(305).456.7252 | www.dbla1.us | www.dbla2.us

DB LEWIS Architect -Thresholds Intl. inc



STYLECRAFT / N. Miami Ave. ReDevelopment, 2009
Miami, Florida



KROME Ave. Facade Renovation, 2009
Miami, Florida



5910 North Bayshore Drive | Miami, FL 33137 | T+1(305).456.7252 | www.dbla1.us | www.dbla2.us

DB LEWIS Architect -Thresholds Intl. inc



SOMI CAFE, 2009
Miami, Florida

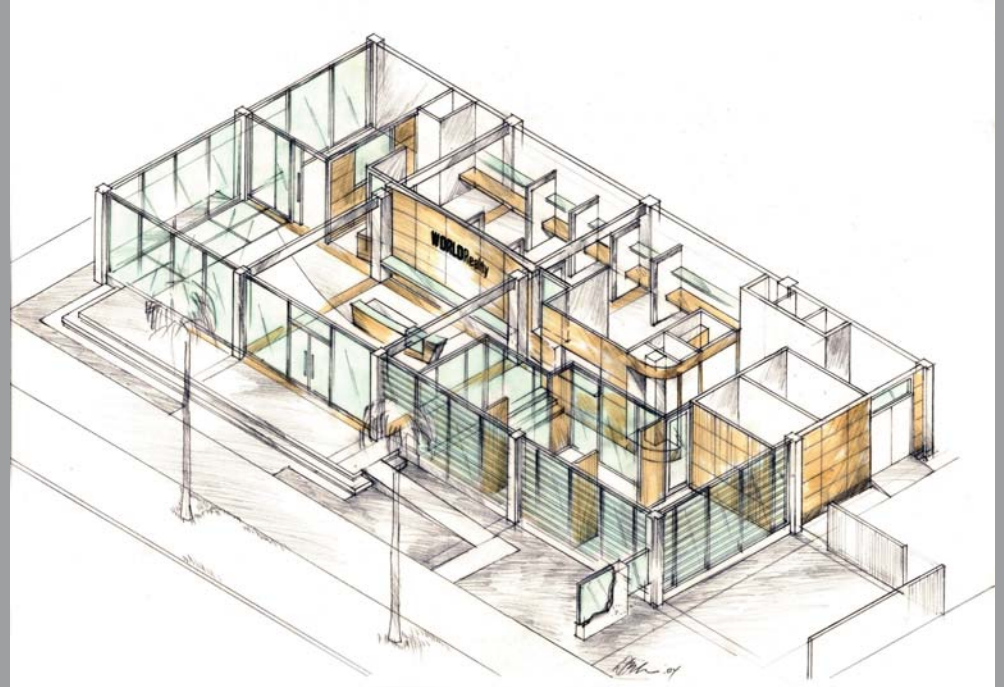


5910 North Bayshore Drive | Miami, FL 33137 | T+1(305).456.7252 | www.dbla1.us | www.dbla2.us

DB LEWIS Architect -Thresholds Intl. inc



WORLD REALTY - Commercial Interiors, 2009
Miami, Florida

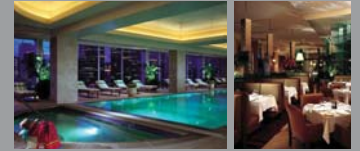


5910 North Bayshore Drive | Miami, FL 33137 | T+1(305).456.7252 | www.dbla1.us | www.dbla2.us

DB LEWIS Architect -Thresholds Intl. inc



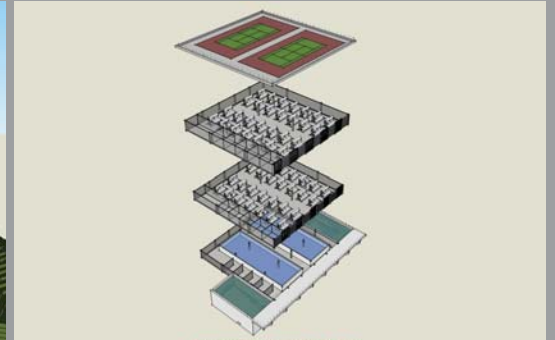
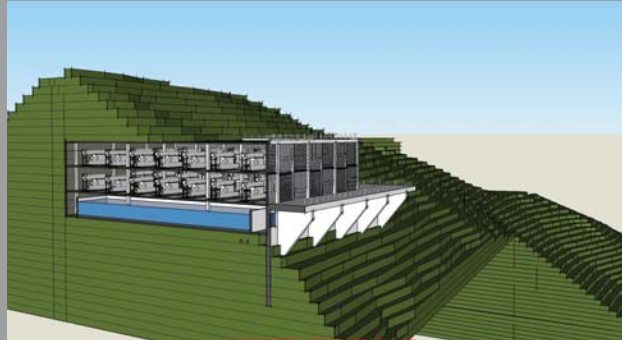
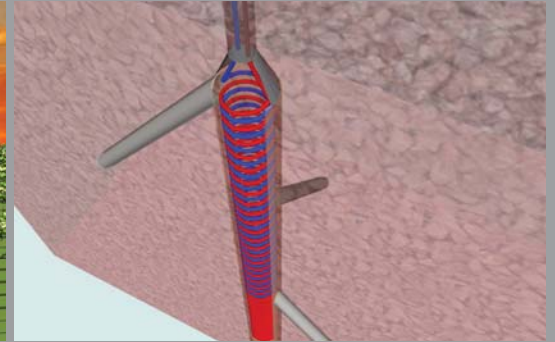
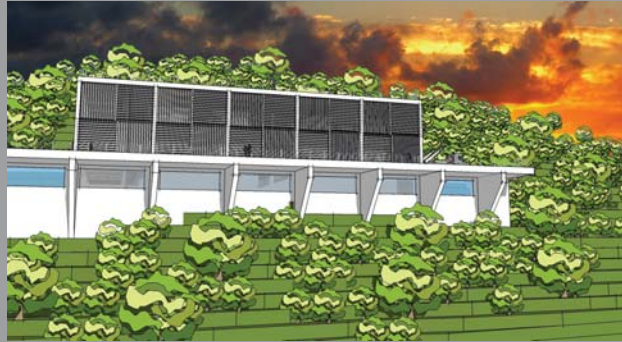
HOUSTON HILTON OF THE AMERICAS, Convention Hotel
(DBL role: project Architect with Arquitectonica)
Houston, Texas



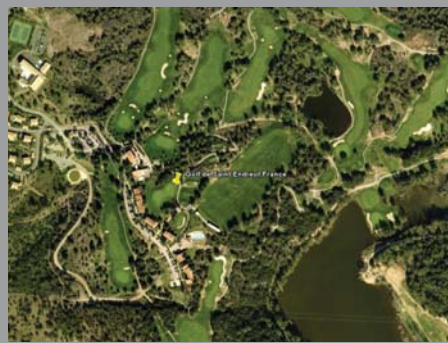
BIG FISH Restaurant-Club, 2010
Miami, Florida



GTherm 35 MW GeoThermal Energy Plant, ST. Thomas, US Virgin Islands
Miami, Florida



St. Endreol Golf Clubhouse, Hotel
Saint Endreol, France



AVENUE ONE
Miami, Florida

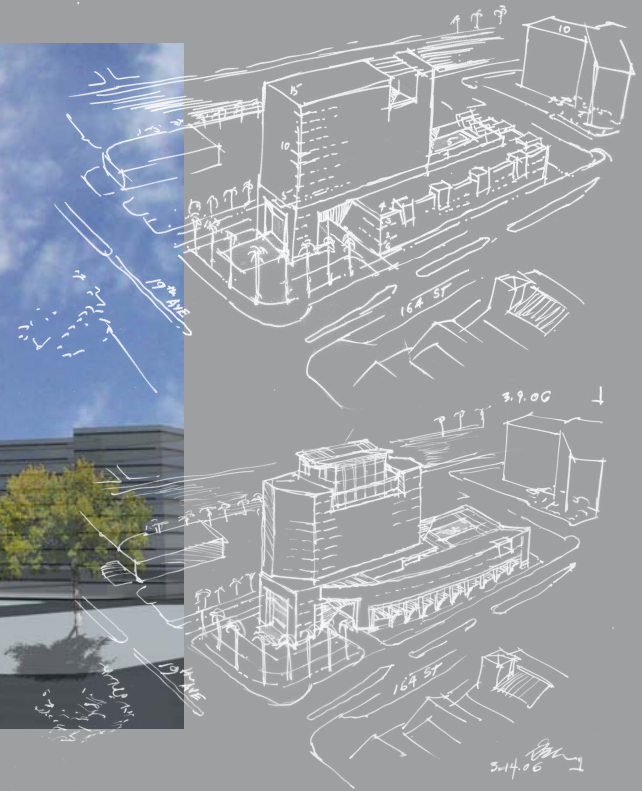


5910 North Bayshore Drive | Miami, FL 33137 | T+1(305).456.7252 | www.dbla1.us | www.dbla2.us

DB LEWIS Architect -Thresholds Intl. inc



DANTE
Miami, Florida

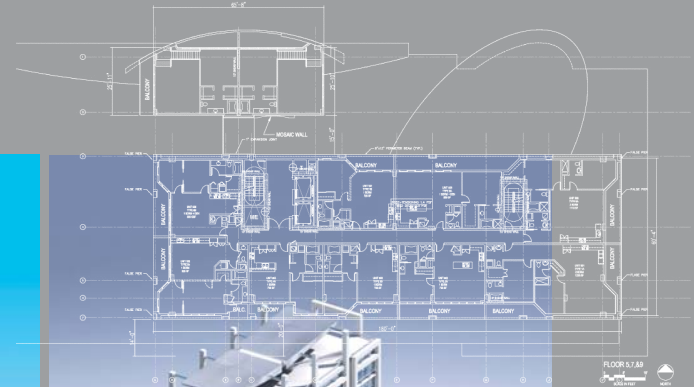


5910 North Bayshore Drive | Miami, FL 33137 | T+1(305).456.7252 | www.dbla1.us | www.dbla2.us

DB LEWIS Architect -Thresholds Intl. inc



AVANT TOWER, 2003
Miami, Florida



SEVEN, 2004
Miami, Florida



5910 North Bayshore Drive | Miami, FL 33137 | T+1(305).456.7252 | www.dbla1.us | www.dbla2.us

DB LEWIS Architect -Thresholds Intl. inc



POMPEII - MIXED USE - COMMERCIAL, 2004
Miami, Florida



5910 North Bayshore Drive | Miami, FL 33137 | T+1(305).456.7252 | www.dbla1.us | www.dbla2.us

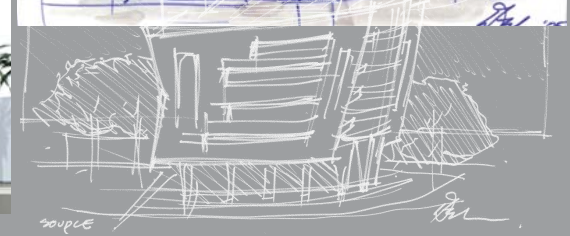
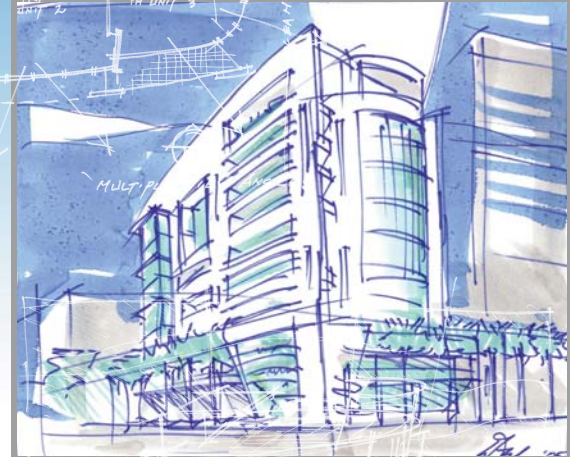
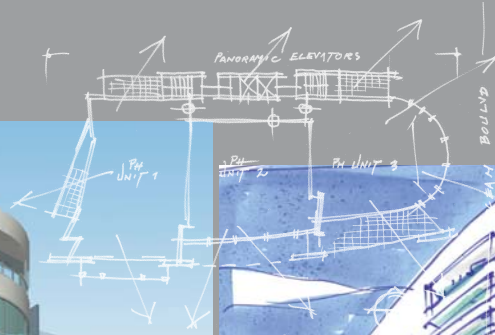
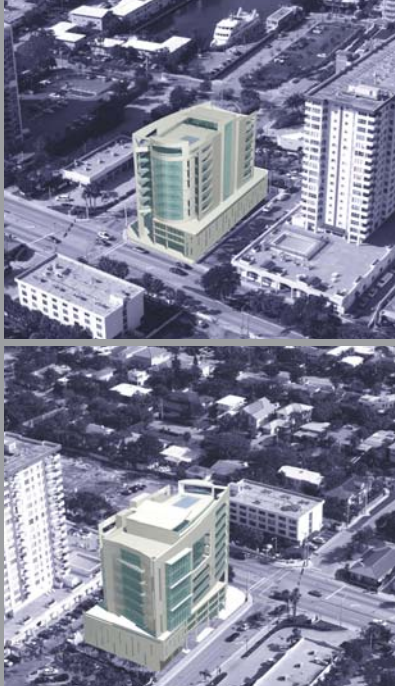
DB LEWIS Architect -Thresholds Intl. inc



RAIL 72 LOFTS - LIVE WORK LOFTS, 2004
Miami, Florida



SOURCE, 2004
Miami, Florida



ROBINSON
Miami, Florida



MAISON SUR LES FALAISES
Etretat, France



DORMY HOUSE
Etretat, France



MILEBELLA, 2009
Miami, Florida



DREAM HOMES, Affordable Housing,
Liberty CityMiami, Florida



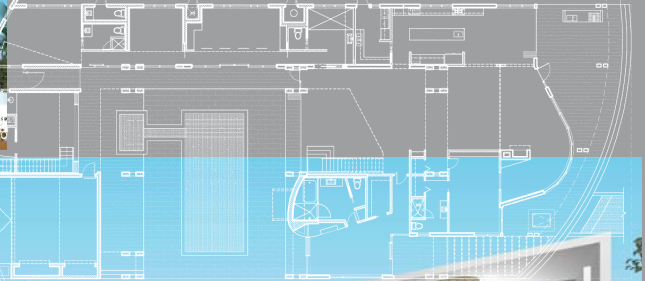
SANCHEZ RESIDENCE,
Miami Beach, Florida



VILLA CLAUDE RESIDENCE,
Coconut Grove-Miami, Florida

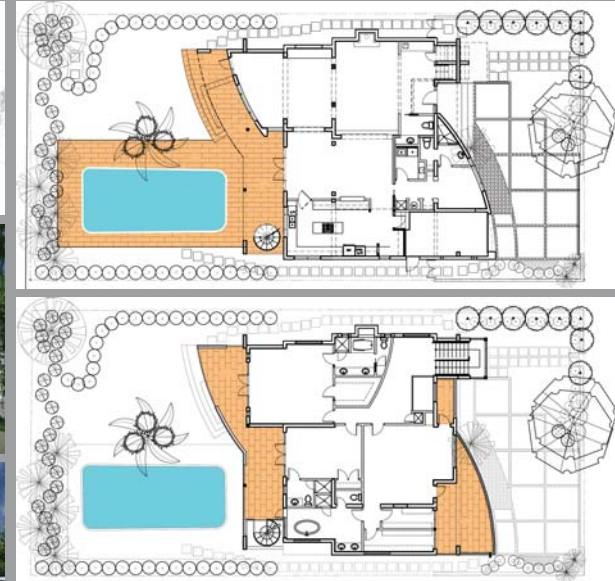


BEGG RESIDENCE,
Miami Beach, Florida



BISCAYNE POINT ISLAND
Miami, Florida

5625 NORTH BAY ROAD, 2004-2008
Miami, Florida



LEMONCITY LOFTS
Miami, Florida



2010 N MIAMI AVENUE LOFTS
Miami, Florida



6789 BISCAYNE, 2004
Miami, Florida



DB LEWIS
ARCHITECTURE + DESIGN

5910 North Bayshore Drive, Miami, FL 33137

T+1(305).456.7252

www.dbla1.us | www.dbla2.us

Architecture+Interiors+Planning/AA0003652 /AR0017357 /ID0004536

Committed to Excellence